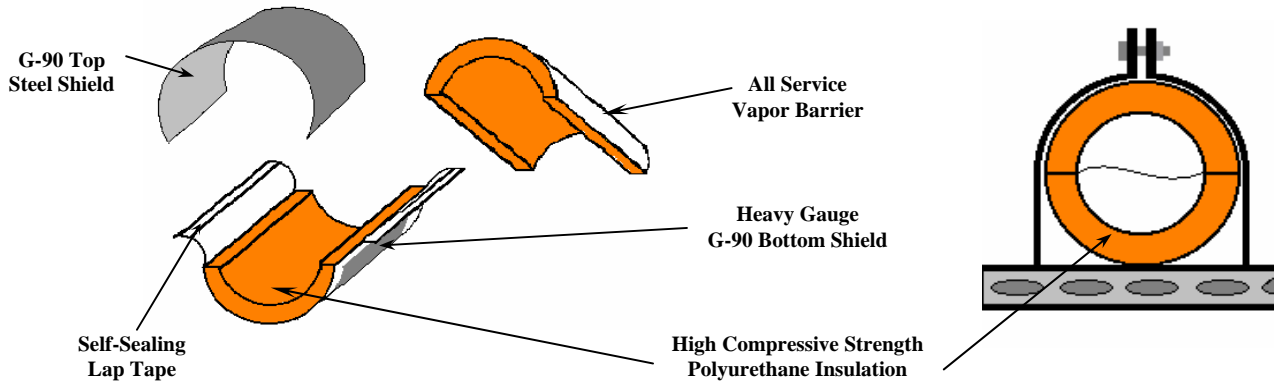


# VALUE ENGINEERED PRODUCTS, INC.

Denver, Colorado

## Chill-Shield



### DIMENSIONS

	1/2" To 1-1/2"	2" To 3"	4" To 6"	8" To 12"	14" To 20"
<b>Insulation Length</b>	6"	9"	12"	12"	12"
	150 mm	230 mm	300 mm	300 mm	300 mm
<b>Shield Length</b>	4"	6"	9"	9"	10"
	100 mm	150 mm	230 mm	230 mm	250 mm
<b>Shield Gauge</b>	20 ga. 1.0 mm	18 ga. 1.3 mm	16 ga. 1.6 mm	14 ga. 2.0 mm	12 ga. 2.8 mm
	<b>Compressive Strength</b>	80 PSI	80 PSI	80 PSI	140 PSI
					Ure. 140 PSI Insert 450 PSI

### ALLOWABLE LOADS - RECOMMENDED SPANS

	2-1/2" Pipe		10" Pipe		18" Pipe	
	Clevis	Trapeze	Clevis	Trapeze	Clevis	Trapeze
	225 lbs.	125 lbs.	1100 lbs.	850 lbs.	2200 lbs.	See MaxSpan
	10 ft. (3 m.)	10 ft. (3 m.)	10 ft. (3 m.)	10 ft. (3 m.)	10 ft. (3 m.)	R.H.
	350 lbs.	170 lbs.	1400 lbs.	1050 lbs.	2400 lbs.	See MaxSpan
	10 ft. (3 m.)	10 ft. (3 m.)	10 ft. (3 m.)	10 ft. (3 m.)	10 ft. (3 m.)	R.H.
	550 lbs.	325 lbs.	1500 lbs.	1250 lbs.	3200 lbs.	See MaxSpan
	10 ft. (3 m.)	10 ft. (3 m.)	10 ft. (3 m.)	10 ft. (3 m.)	10 ft. (3 m.)	R.H.
	800 lbs.	525 lbs.	1800 lbs.	See MaxSpan	3500 lbs.	See MaxSpan
	10 ft. (3 m.)	10 ft. (3 m.)	10 ft. (3 m.)	R.H.	10 ft. (3 m.)	R.H.

### MATERIAL SPECIFICATIONS

- Polyurethane, 80 to 450 PSI Meeting ASTM C-203, C-518, C-585, C-795, D-1621, D-1622, D-1623, and E-84.
- High Compressive Strength Inserts, 450 PSI, Standard For Pipe 14" and Larger, Meeting ASTM C-585, C-795.
- Vapor Barrier Jacket of Non-Reactive Polyester Meeting ASTM D-744, D-828, and E-84, Flame Spread -5- and Smoke Developed -5-.
- Adhesive Complying to NFPA 90-A and ASTM E-84, Flame Spread -10-, Smoke Developed -0-.
- Galvanized Steel Shields, G-90 Small Check per ASTM A-527.
- 100% American-Made Components and Construction.
- Asbestos-Free Materials.

#### Submitted For Approval Per:

Division: \_\_\_\_\_, Section: \_\_\_\_\_, Para.: \_\_\_\_\_.

Project: \_\_\_\_\_

Customer: \_\_\_\_\_

Engineer: \_\_\_\_\_

#### Notes:

---



---



---



---

Approved By: \_\_\_\_\_

Date: \_\_\_\_\_