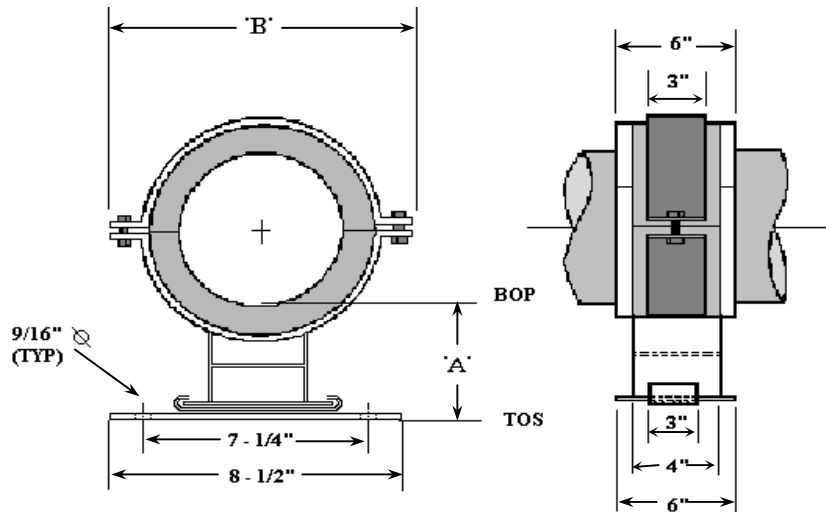


PG-2 Insulated Pipe Guide Medium Bore Pipe



APPLICATION TABLE

| Pipe Size (IPS) | Travel Allowed | Load (Lbs.) | | Insulation Thickness | | | | | | | | | | | | | | | |
|--------------------|-------------------|-------------|------|----------------------|-----|--------|-----|-----|-----|--------|-----|-----------------------------------|-----|--------|-----|-----------------------------------|-----|-----|----|
| | | | | 1" | | 1-1/2" | | 2" | | 2-1/2" | | 3" | | 3-1/2" | | 4" | | | |
| | | | | 'A' | 'B' | 'A' | 'B' | 'A' | 'B' | 'A' | 'B' | 'A' | 'B' | 'A' | 'B' | 'A' | 'B' | | |
| 1-1/2 | +/- 2" | 535 | 535 | See PG-1 | | | | 5.5 | 10 | 6.1 | 11 | 6.6 | 12 | 7.1 | 13 | 7.7 | 15 | | |
| 2 | +/- 2" | 670 | 670 | | | | | 5.3 | 10 | 5.9 | 11 | 6.4 | 12 | 6.9 | 13 | 7.5 | 15 | | |
| 2-1/2 | +/- 2" | 810 | 810 | | | | | 5 | 10 | 5.6 | 11 | 6.1 | 12 | 6.6 | 13 | 7.2 | 15 | 7.8 | 16 |
| 3 | +/- 2" | 990 | 990 | 4.8 | 10 | 5.3 | 11 | 5.8 | 12 | 6.3 | 13 | 7 | 15 | 7.5 | 16 | See PG-3 For Larger Pipe Sizes | | | |
| 4 | +/- 2" | 1270 | 1270 | 4.3 | 10 | 4.8 | 11 | 5.3 | 12 | 5.8 | 13 | 6.4 | 15 | 7 | 16 | | | | |
| 5 | +/- 2" | 1570 | 1570 | 4.3 | 11 | 4.8 | 12 | 5.3 | 13 | 5.9 | 15 | 6.4 | 16 | | | | | | |
| 6 | +/- 2" | 1870 | 1870 | 4.3 | 12 | 4.8 | 13 | 5.4 | 15 | 5.9 | 16 | See PG-3 For Larger Pipe Sizes | | | | | | | |
| 8 | +/- 2" | 2430 | 2430 | 4.4 | 15 | 4.9 | 16 | | | | | | | | | | | | |

MATERIAL SPECIFICATIONS

INSULATION INSERT

- 360° Xonotlite Calcium Silicate, Minimum 450 PSI Compressive Strength, Meeting ASTM C-533, C-585, C-795, E-72, and E-84, Flame Spread -0-, Smoke Developed -0-.
- K-Factor of .54 @ 200° F.
- Heavy Gauge, G-90 Galvanized Steel Protection Shield.
- Vapor Barrier Jacket of Non-Reactive Polyester Meeting ASTM D-744, D-828 and E-84.

GUIDE HARDWARE

- Powder Coated Carbon Steel Meeting ASTM B-117 (1000 Hour Salt Spray), ASTM D-3363 (Pencil Hardness), ASTM D-3359 (Adhesion).
- Slide Pad of Heat Bonded P.T.F.E.
- Fasteners - Plated, Grade 2 Industrial.

Submitted For Approval Per:

Division: _____, Section: _____, Para.: _____.

Project: _____

Customer: _____

Engineer: _____

Notes:

Approved By: _____

Date: _____