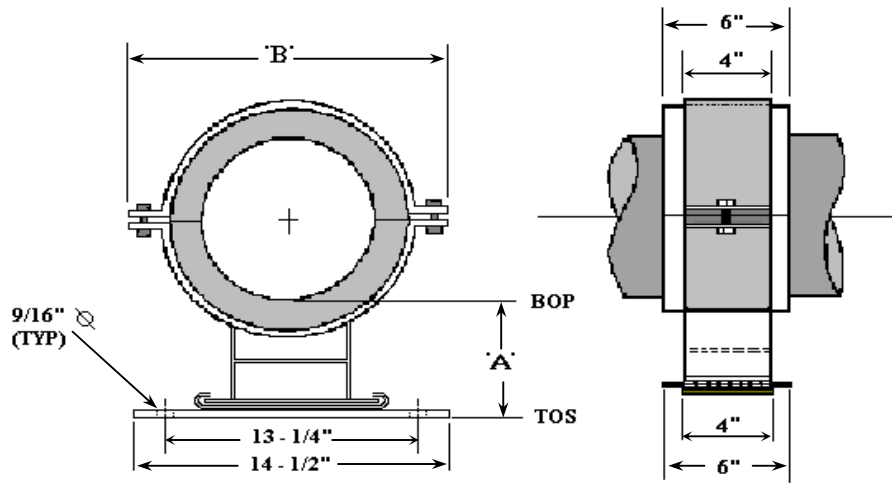


## PG-3 Insulated Pipe Guide

### Large Bore Pipe



### APPLICATION TABLE

Pipe Size (IPS)	Travel Allowed	Load (Lbs.)		Insulation Thickness															
				1"		1-1/2"		2"		2-1/2"		3"		3-1/2"		4"			
				'A'	'B'	'A'	'B'	'A'	'B'	'A'	'B'	'A'	'B'	'A'	'B'	'A'	'B'		
4	+/- 2"	1690	1690	See PG-2 For Medium Pipe Sizes												8.9	17		
5	+/- 2"	2100	2100	See PG-2 For Medium Pipe Sizes												8.4	17		
6	+/- 2"	2500	2500	See PG-2 For Medium Pipe Sizes												7.8	17		
8	+/- 2"	3250	3250	See PG-2 For Medium Pipe Sizes												6.8	17		
10	+/- 2"	4050	4050	5.8	17	6.5	18	7	19	7.5	20	8.1	19	8.6	20				
12	+/- 2"	4800	4800	6	19	6.5	20	7.2	21	7.8	22	8.2	23	8.8	24				
14	+/- 2"	5300	5300	5.9	20	6.6	21	7.1	22	7.6	23	Call Factory For Larger Pipe Sizes							
16	+/- 2"	6100	6100	6.1	22	6.6	23	7.1	24										

### MATERIAL SPECIFICATIONS

#### INSULATION INSERT

- 360° Xonotlite Calcium Silicate, Minimum 450 PSI Compressive Strength, Meeting ASTM C-533, C-585, C-795, E-72, and E-84, Flame Spread -0-, Smoke Developed -0-.
- K-Factor of .54 @ 200° F.
- Heavy Gauge, G-90 Galvanized Steel Protection Shield.
- Vapor Barrier Jacket of Non-Reactive Polyester Meeting ASTM D-744, D-828 and E-84.

#### GUIDE HARDWARE

- Powder Coated Carbon Steel Meeting ASTM B-117 (1000 Hour Salt Spray), ASTM D-3363 (Pencil Hardness), ASTM D-3359 (Adhesion).
- Slide Pad of Heat Bonded P.T.F.E.
- Fasteners - Plated, Grade 2 Industrial.

#### Submitted For Approval Per:

Division: \_\_\_\_\_, Section: \_\_\_\_\_, Para.: \_\_\_\_\_.

Project: \_\_\_\_\_

Customer: \_\_\_\_\_

Engineer: \_\_\_\_\_

#### Notes:

---



---



---



---

Approved By: \_\_\_\_\_

Date: \_\_\_\_\_