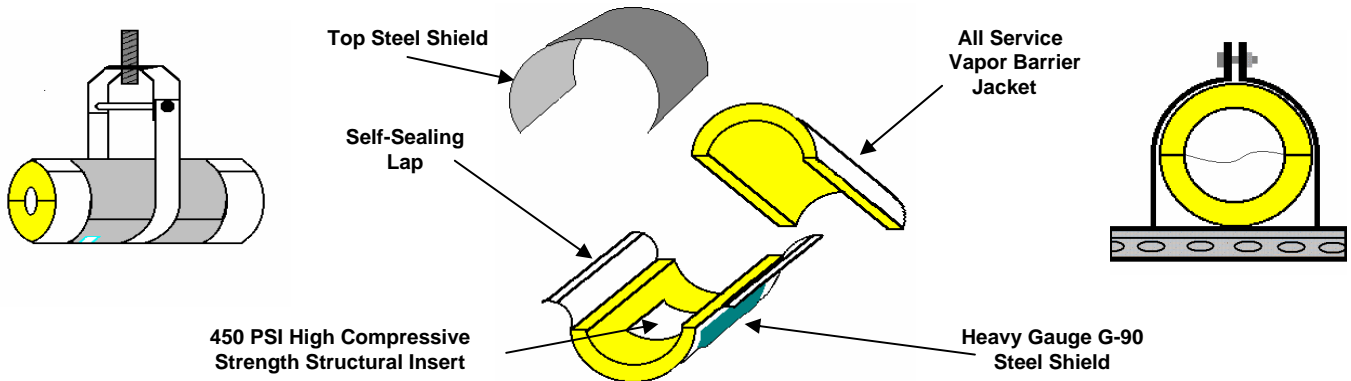


VALUE ENGINEERED PRODUCTS, INC.

Denver, Colorado

PRO-SHIELD



DIMENSIONS

	1/2" To 1-1/2"	2" To 5"	6" To 8"	10" To 12"	14" To 24"
Insulation Length	6"	6"	9"	9"	12"
	150 mm	150 mm	230 mm	230 mm	300 mm
Shield Length	4"	4"	6"	6"	10"
	100 mm	100 mm	150 mm	150 mm	250 mm
Shield Steel Gauge	22 ga. 0.9 mm	20 ga. 1.0 mm	16 ga. 1.6 mm	14 ga. 2.0 mm	12 ga. 2.8 mm
	Compressive Strength	135 PSI	135 PSI	135 PSI	Cal Sil 135 PSI Insert 450 PSI

ALLOWABLE LOADS - RECOMMENDED SPANS

	<u>Clevis</u>	<u>Trapeze</u>		<u>Clevis</u>	<u>Trapeze</u>		<u>Clevis</u>	<u>Trapeze</u>
2-1/2" Pipe	275 lbs. 10 ft. (3 m)	145 lbs. 10 ft. (3 m)	10" Pipe	1160 lbs. 10 ft. (3 m)	830 lbs. 10 ft. (3 m)	18" Pipe	3300 lbs. 10 ft. (3 m)	See MaxSpan R.H.
4" Pipe	380 lbs. 10 ft. (3 m)	170 lbs. 10 ft. (3 m)	12" Pipe	1400 lbs. 10 ft. (3 m)	1175 lbs. 10 ft. (3 m)	20" Pipe	4000 lbs. 10 ft. (3 m)	See MaxSpan R.H.
6" Pipe	605 lbs. 10 ft. (3 m)	330 lbs. 10 ft. (3 m)	14" Pipe	1800 lbs. 10 ft. (3 m)	1250 lbs. 10 ft. (3 m)	22" Pipe	4750 lbs. 10 ft. (3 m)	See MaxSpan R.H.
8" Pipe	800 lbs. 10 ft. (3 m)	510 lbs. 10 ft. (3 m)	16" Pipe	2600 lbs. 10 ft. (3 m)	See MaxSpan R.H.	24" Pipe	6175 lbs. 10 ft. (3 m)	See MaxSpan R.H.

MATERIAL SPECIFICATIONS

- ◇ Calcium Silicate, 135 PSI Meeting ASTM C-533, C-585, C-795 and E-84, Flame Spread -0-, Smoke Developed -0-.
- ◇ High Compressive Strength Inserts, 450 PSI, Standard For Pipe 12" and Larger, Meeting ASTM C-533, C-795 and E-84, Flame Spread -0-, Smoke Developed -0-.
- ◇ Vapor Barrier Jacket of Non-Reactive Polyester Meeting ASTM D-744, D-828 and E-84, Flame and Smoke -5-/-5-.
- ◇ Adhesive Complying to NFPA 90-A and ASTM E-84, Flame Spread -10-, Smoke Developed -0-.
- ◇ Galvanized Steel Shields, G-90 Small Check per ASTM A-527.
- ◇ 100% American-Made Components and Construction.
- ◇ Asbestos-Free Materials.

Submitted For Approval Per:

Division: _____, Section: _____, Para.: _____.

Project: _____

Customer: _____

Engineer: _____

NOTES:

Approved By: _____

Date: _____